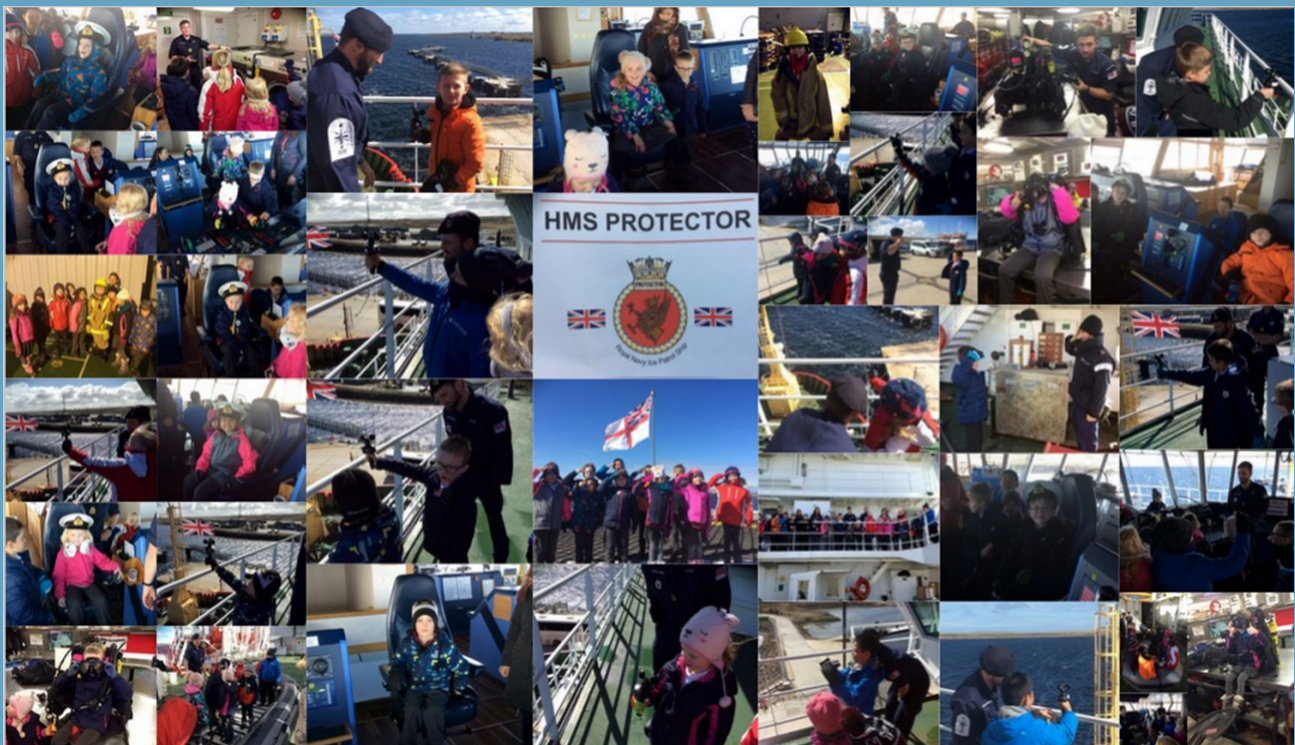


HMS Protector visit

A highlight this week for children in KS1 and KS2 was their visit to HMS Protector. This curriculum visit was an opportunity to extend learning as the visit was focused on:

- Weather and how the Navy cope with the wild/strong weather and how the ship is built to cope with stormy weather.
- Food limits and storage over long periods of time.
- Safety equipment on the ship.
- Personal safety equipment and clothes.
- Recreation on board.
- Traditional customs for example 'piping an officer' on board.
- Similarities with the past - has anything stayed the same from the 'Victorian Seafaring era'?

Thank you to all the company aboard HMS Protector for a memorable afternoon.





Mount Pleasant Extra!

Newsletter 6 | 5th October 2018

Assistant Head, DCYP, Inspection and Advisory Service

Last week, for the first time in four years, Mount Pleasant School had a visit from one of the DCYP Internal Inspection and Advisory Service Team. Many of you met Rowley Bucknill and all the children and staff in school had time to talk to him. We both spent time in classrooms, looked at books, spoke to children and staff and Rowley also spoke to some parents and School Governance Committee Members.

Some of the highlights from his internal report, provided to DCYP and School are:

- Over the past three years the key headline for the pupil attainment data is that the school has been consistently and significantly out performing national averages at the end of EYFS, Y1 phonics checks, end of KS1 and KS2. This indicates that the staff team and children in Mount Pleasant School have achieved and maintained very high educational standards over the past three years.
- Book scrutiny in the review supported the assessment that pupils make good or better progress from their relevant starting points.
- There are many opportunities which are sought by the school to enhance the pupils' learning through the international context of a British military base on the Falklands. This included a safety talk and demonstration in school by the RMP with 'sniffer' dogs, a Barnaby Bear visit from a school in Lincolnshire with a follow up skype between the schools, a visit to a warship, the courtroom in Stanley visit and presentation by the Judge, launching a weather balloon into space, plans to visit the penguin colonies, bike ability training sessions - the list goes on. The community is supportive of the school and the school welcomes the opportunities provided by the community. This maximises the enhanced curriculum learning which is provided for the children in the inspiring and unique context of the Falkland Islands.
- Values based education was clearly in evidence with the children being praised for demonstrating the school values and the children commenting on and showing the values while they were at lunch and on the playground. Assemblies and the 'value of the month' reinforced the importance values which are specifically explored in the PSHE programme.
- The pupils identified the following strengths of the school; they liked knowing everyone in the school, the opportunities to learn a range of musical instruments, the trips such as going on a helicopter and felt that they were getting a 'perfect' education.
- The children could identify how to keep themselves safe online
- All the children said that they were happy at school with many commenting that it was like a large family.

We look forward to continuing to provide a very good education for the pupils in our school.



Mount Pleasant Extra!

Newsletter 6 | 5th October 2018

Events....

9th October—Enrichment session 4: 15:05-16:00

12th October—Senior Leadership Team Drop in time, parents are welcome to join Mr Margerison and Ms Summers for coffee and a chat- 08:45-09:30

19th October-Golden Assembly (by invitation)

22nd—26th October—Half Term

30th October-Enrichment session 1: 15:05-16:00

6th November—Enrichment session 2: 15:05-16:00

7th November—Parents Open Evening: 15:15-17:15

13th November—Enrichment session 3: 15:05-16:00

20th November—Enrichment session 4: 15:05-16:00

30th November-Golden Assembly (by invitation)

6th December—Christmas Production TBC

7th December—End of term 13:15

Foundation Stage One (N2) and Foundation Stage Two

On Monday 1st October Mrs Bradbury took over teaching Foundation Stage One and Foundation Stage Two and the children have enjoyed being in their own classroom. Mrs Bradbury will be with us until 7th December.

As a reminder...

School for FS1 and FS2 will start at 08:50. Please take your children to the FS classroom where Mrs Bradbury will open the door at 08:50 to welcome you to the classroom. **School will finish at 15:05** and children should be collected from the Foundation Stage Classroom. FS 1 children, going home at 13:00 should continue to be collected from Nursery (Mrs Deane).

N2 children will have the option to stay for the full day on Wednesday, Thursday and Friday. If you would like to use this extended day care please call to the school office, they will be able to provide new contract sheets for you to return. EDC will be available from Wednesday 3rd October.



Mount Pleasant Extra!

Newsletter 6 | 5th October 2018

Enrichment

This year we have an exciting and interesting enrichment programme, this is run by teachers and is a well-planned and prepared activity which will run afterschool as listed below. At the start of each half term, we will accept requests to join in the activities and let you know if your child has been successful. On occasion, where there are more expressions of interest than spaces, all the available spaces will be allocated by a raffle.

Activities will take place on the dates indicated, subject to change, between 15:05 and 16:00.

Term 1

Second Half

30th October, 6th, 13th and 20th November

Mrs Deane	Stay and Play for Nursery and	Nursery, FS1 and FS2
Mrs Bradbury	Craft (max 10)	KS1 and KS2
Mrs Eaton-Bell	PE Club (max 10)	KS1 and KS2

PE club will use the school playground—children will need warm clothes

Please indicate a 1st and 2nd preference for your child and return this slip to the school office by 08:45 on 9th October 2018.

My Child(ren) _____ would like to take part in the following activity.

Mrs Deane	Stay and Play for Nursery and	Nursery, FS1 and FS2
Mrs Bradbury	Craft (max 10)	KS1 and KS2
Mrs Eaton-Bell	PE Club (max 10)	KS1 and KS2

PE club will use the school playground—children will need warm clothes

Children must be collected at 16:00.